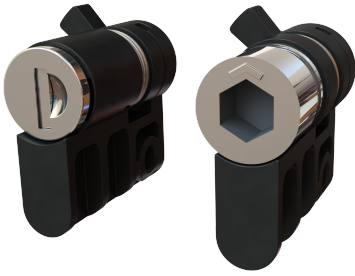


# VISION PLUG



The Vision Plug can be used with all Vision products designed for a 40 mm profile cylinder. It is used for either a tool operated insert or a key lock cylinder. The plug can be used as long-term solution as well as to keep the cabinet closed until the end user replace the plug with their own profile cylinder.

Both insert and cylinder version is spring loaded and goes back to closed position by itself after opening. Mounting screw is delivered with the plug.



## MATERIAL

**Cylinder:** Zinc die cast, stainless steel 304 cap and dust shutter

**Housing:** Glass fibre reinforced Polyamide (PA6GF30)

**Insert:** Zinc die cast, chrome plated or black powder coated

**Screw:** Steel, zinc plated

## RELATED PRODUCTS

**Handles:** 1-005.10, 1-005.15, 6-020, 6-010, 1-002.02, 1-002.12

**Keys:** 2-372, 2-370

Use the Index Code at [industrilas.com](http://industrilas.com)

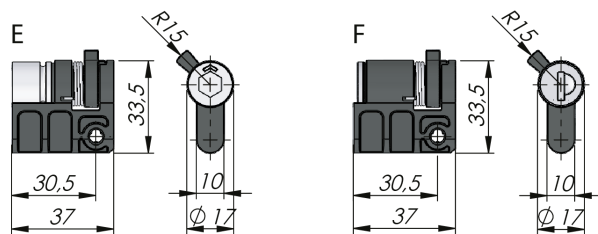
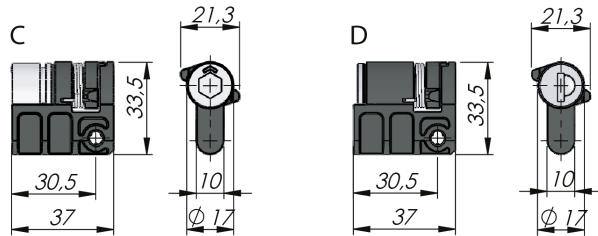
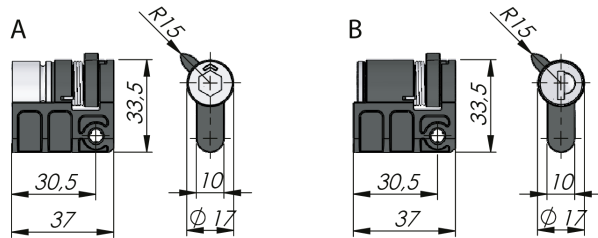
## TECHNICAL INFORMATION

Drawing A and B for ErgoLine.

Drawing C and D for swing handle.

Drawing E and F for lift handle.

Round cylinder version delivered with two keys.



**Make your selections in each column to create your article number (AAAAAA-BCDD)**

AAAAAA Housing	B For this product	C Surface treatment insert	DD Insert
511067 VISION Plug PA6 / Zinc inserts	5 Ergo Line [A-B]	0 For cylinder and push-button versions	01 Square 6
	6 Swing handle [C-D]	2 Chrome plated	03 Square 7
	7 Lift handle [E-F]	6 Black powder coated	05 Square 8
			07 Square 8 / slotted
			11 Square 8 / recessed
			14 Triangle 7
			15 Triangle 8
			16 Triangle 10
			22 Double Bit 3
			24 Double Bit 5
			26 Slotted
			29 Slotted recessed
			32 Hexagon 11
			34 Recessed hexagon 8
			35 Recessed hexagon 10
			36 Recessed hex 8 / 3 mm pin
			80 Keyed to differ
			81 Keyed alike IL101
			82 Keyed alike IL0333